

LadueCoalition.com Presents

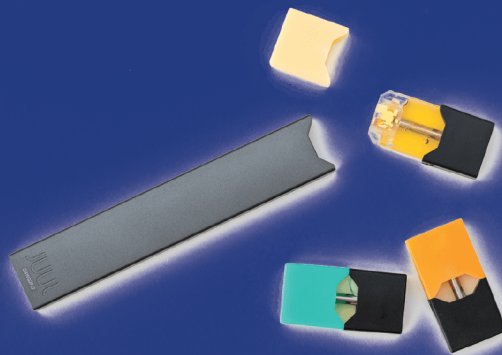
# JUULING

**13**  
February

Is your child the 1 in 5 who reported using E-cigs in the last 30 days?

6:30pm to 7:30pm

## What is JUULING



### DID YOU KNOW???

Almost 20% of LHWHS students reported using E-Cigarettes in the last 30 days.

Over 16% LHWHS students reported using pot in the last 30 days.

41.8% of teens cite "no" or "slight risk" if they smoke e-cigarettes

Presentation By

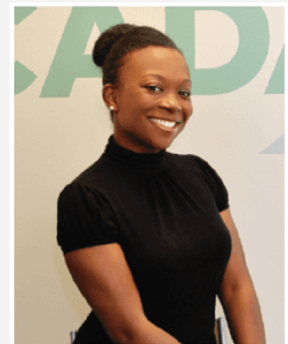
# NCADA

### What is JUULING?

Come hear why JUULING so appealing to our students and what you can do as a parent to prevent JUULING. Heather Craig has a Master's Degree and works as a community strategist for NCADA where she is passionate about prevention efforts and all issues that negatively impact families.

***JOIN US***  
***LHWHS Cafeteria***  
***Feb 13th, 2019***  
***6:30-7:30pm***

Heather Craig



NCADA-STL.org

Love Them Enough To Say  
NO to ALCOHOL

DON'T BE A  
FRIEND.



BE A  
PARENT.



www.LadueCoalition.com